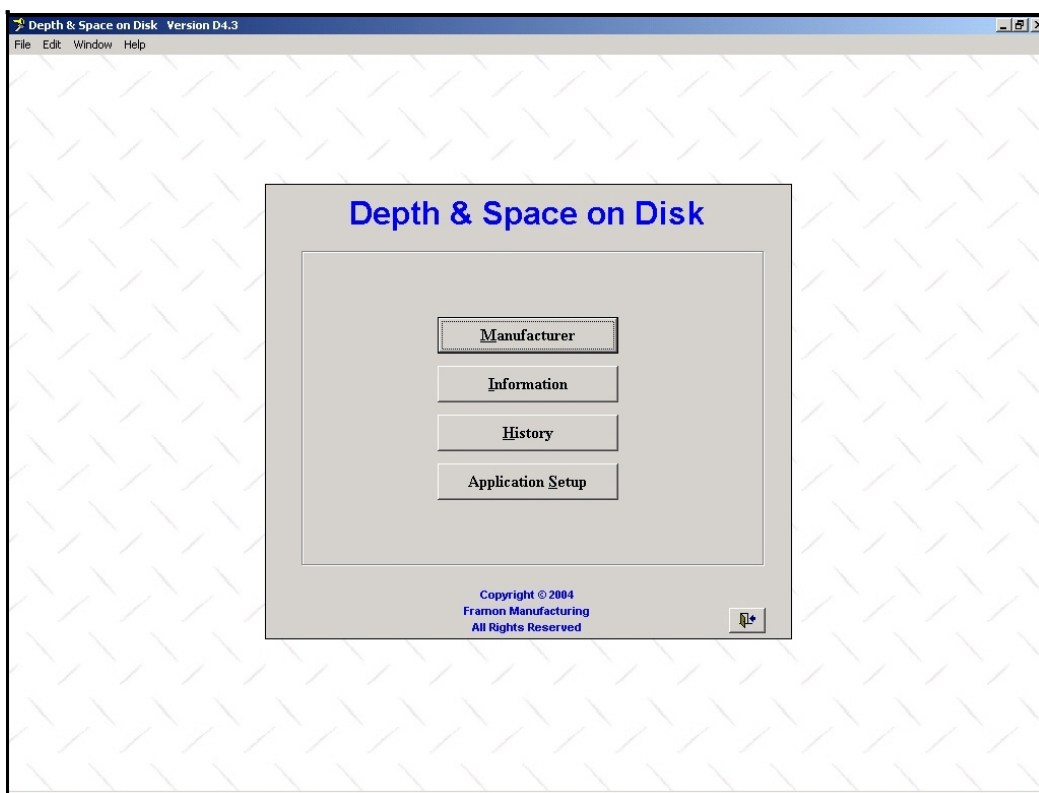


# Framon Depth & Space Manual On Disk™

## Instruction Manual



Framon Manufacturing Company, Inc.  
909 Washington Ave  
Alpena, MI 49707  
Web: [www.framon.com](http://www.framon.com)  
E-mail: [info@framon.com](mailto:info@framon.com)  
Phone: 989-354-5623  
Fax: 989-354-4238

## **COPYRIGHT STATEMENT/LICENSING**

All rights reserved. No part of this program may be reproduced or transmitted in any form or by any means, electronic or mechanical, or any information storage and retrieval system now known or to be invented, without permission in writing from the publisher. Use of the program is restricted to **ONE REGISTRANT at ONE LOCATION**. You may install the program on additional computers owned or leased by your company at the same location, or in service vehicles operating from that location. Any duplicating will be prosecuted. Problems arising from unauthorized duplication on additional computers are the sole responsibility of the purchaser.

## **RETURN POLICY**

All opened software is non-returnable.

## **UPDATE INFORMATION**

Updates for the program will be available periodically. Be sure to check the Framon website periodically for program updates. Updates on our website will be free, but will only fix program errors if any are found. Data updates are available by order only, and there will be a charge. You have the ability to keep the program updated by adding charts if you do not wish to pay to update the program.

## **OUR THANKS!**

Thanks for purchasing the Framon D & S Manual on Disk! We are confident you will find the program a valuable asset to your business.

The Framon Depth & Space Manual on Disk is derived from our top selling Genericcode Code program.

## **SUPPORT SERVICES**

Support for the program can be attained in a variety of ways. You can contact Framon Manufacturing Company at (989) 354-5623. We are open from 8:00 am until 4:30 pm Eastern time, Monday through Friday. You can also e-mail us at [info@framon.com](mailto:info@framon.com). We will need to know what version of the program you are running, what operating system, and exactly what was done to cause the problem. You should be in front of the program on your computer when calling. If you are reporting an error, it is useless to report it unless you can give us the information above in detail.

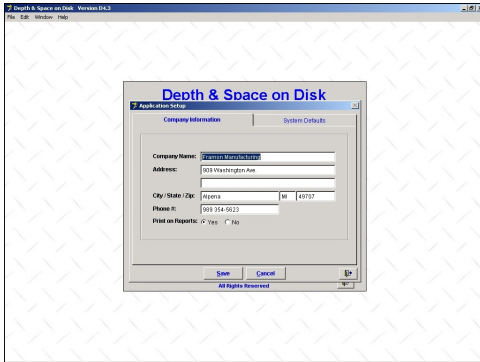
## **INSTALLING THE PROGRAM**

To install the program, place the enclosed CD-ROM in your drive. Click on the Start button and select "Run..." In the dialog box, type "D:SETUP" (no quotes). The install wizard will begin. Click through the menus to install the program and click "Exit" when done. We suggest you accept all default directories for proper program operation. The install program will place an icon on your desktop to "Depth & Space On Disk V4". Double click the icon to start the program.

## ERROR REPORTING

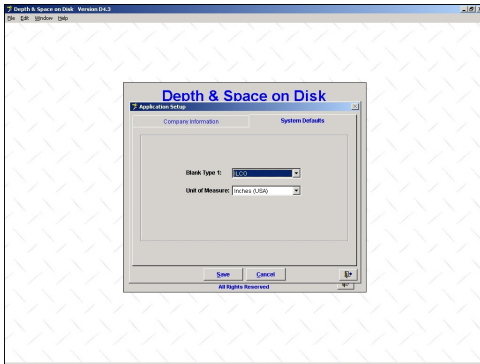
We would appreciate hearing of any suspected errors in the program. No program is ever 100% complete, as there is simply no way to check every single item in the program. The easiest way to report an error is to send us e-mail to [info@framon.com](mailto:info@framon.com). Indicate which version of the program you are using and what you did to determine the error. We will attempt to validate your findings and put a correction in the following years' program.

## APPLICATION SETUP SCREEN

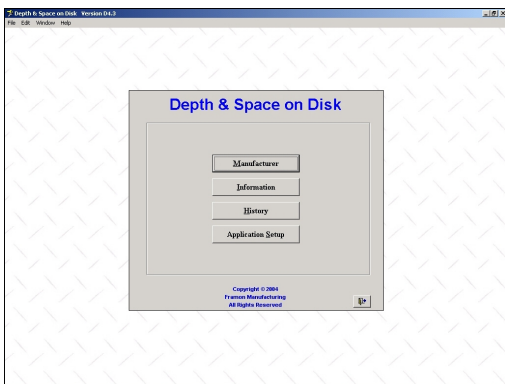


The first time the program is used you should enter the Application Setup screen and enter your company information. You can also choose whether to have your company information shown on the top of the printouts in the program.

The next tab will allow you to choose your default key blank, and whether to display measurements in inches or millimeters. Be sure to click the "Save" button on the bottom of the window to retain your information.

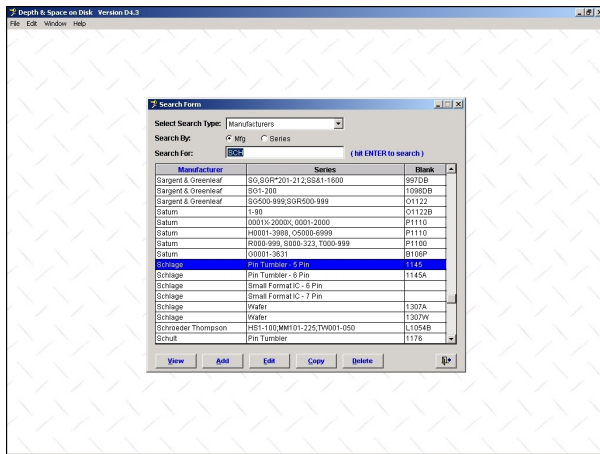


## OPENING SCREEN



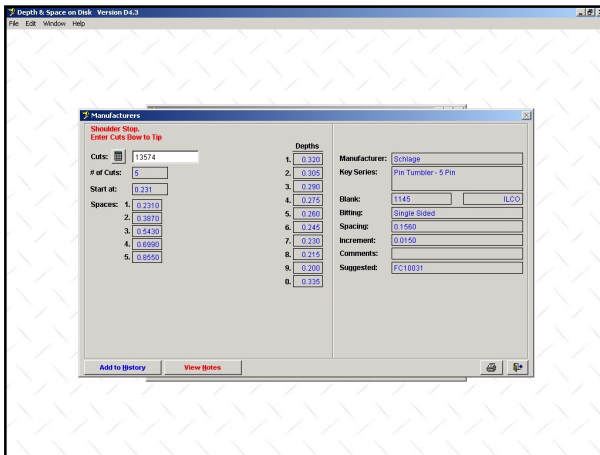
The opening screen of the program allows you to choose which area of D & S on Disk you wish to use. You can either use the mouse and click on a button or use the "Alt" key by holding it down and pressing the underlined letter of the section you wish to access. To exit from the program, click on the bottom right icon (door).

## MANUFACTURER SECTION



the bottom of the window.

The Manufacturer section is where you will find depth & space information for a variety of lock manufacturers. After clicking on the Manufacturer button, you will be at the screen shown at the left. Enter the name of the lock manufacturer you wish to cut a key for (or the brand of lock, for vehicle applications) and press Enter. The program will find the closest match and highlight it. You can then scroll down & find the particular chart you wish to view. Once you find the correct chart, click the “View” button at



After clicking on the “View” button the screen at the left will appear. Depths and spacings for the key will be shown. Also shown will be spacing, increment, and suggested cutter. Above the “Cuts” box will be instructions on how to load the key, and the way the manufacturer would normally have the bitting listed (for I/C keys and select others, you will be asked to enter the cuts tip to bow, even though the #2 & #2-D cut from bow to tip only).

## ENTERING CUTS

You do not need to enter cuts/bittings into the Cuts box unless you want to save the customer data in the History database for later retrieval.

## ADD TO HISTORY

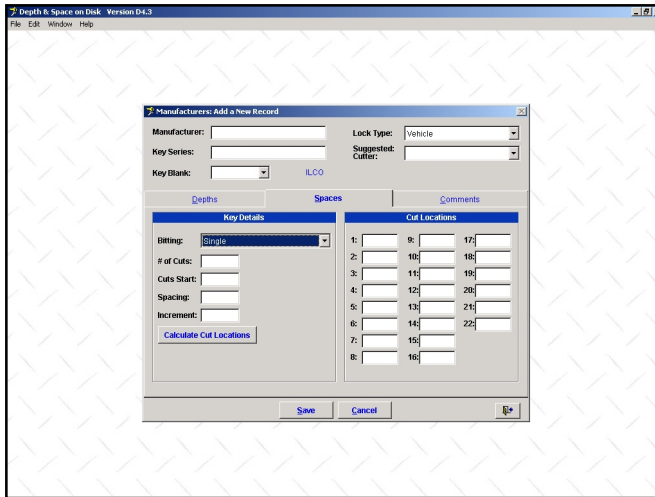
You can enter cuts for the chart you just looked up and add the listing to the History database for future retrieval if desired. Click the Add To History button and a dialog box will ask for key details. Enter the customer name or any other information you wish to be able to organize the information by and click OK. The record will be available from the main menu by clicking “History”.

## VIEW NOTES

For spacing block information and other pertinent data for cutting the key on a Framon code machine, click on the View Notes button. A small text box will appear and show spacing block number and any other information pertinent to originating the key.



## ADDING A RECORD TO THE MANUFACTURER DATABASE



You can use the Add, Edit, Copy, and Delete buttons at the bottom of the Manufacturer section to customize the program as you need to. Use the **Add** button to add a new depth & space chart to the program. The **Edit** button will allow you to modify the information shown. **Copy** allows you to take an existing chart and duplicate it, for later editing when you want to save the original chart & make changes to a similar chart. **Delete** will remove the chart from the database. Once gone,

the only way to get back the original chart is to reinstall the program.

## INFORMATION REQUIRED WHEN ADDING A CHART

When you are adding a chart, all fields must be filled in. Here is a breakdown of what the program expects for each field:

*Manufacturer:* The name of the lock manufacturer or vehicle manufacturer. This is the field that the chart will be organized by, alphabetically.

*Key Series:* The code series, or lock type, or other description of the application.

*Key Blank:* Ilco key blank number. If you use other manufacturers key blank numbers, enter the Ilco number in the field. It will be converted when using the program.

*Lock Type:* Select the lock type; vehicle, utility, padlock, etc.

*Suggested Cutter:* Angle & flat recommended for the particular series.

Below these five fields are three tabs; Depths, Spaces, and Comments. Start with Depths, and fill in the information for the other two tabs.

### Depths

*Label / Depth:* Enter a cut label (labels would normally be whole numbers; ie depth #1) and enter the depth of the cut in thousandths of an inch, ex: .305. You must enter the decimal before the digits.

### Spaces

*Bitting:* Select single, Double Same Both Sides, Double Staggered Cuts, or Double Different Cuts Each Side.

*# of Cuts:* The number of cuts on the key.

*Cuts Start:* The starting position of the first cut in thousandths.

*Spacing:* The spacing between cuts in thousandths of an inch.

*Increment:* The drop between cuts in thousandths of an inch.

After this information is entered, use the “**Calc Locations**” button to fill in the cuts for the key. If the spacing between cuts is not consistent, you can manually overwrite the spacings.

### Comments

*Comments:* Enter short comments here. These will appear on the “View” screen to the right, above the suggested cutter.

*Loading Instructions:* The way that the key is to be gauged in the key vise. If you select “OTHER”, you can explain the type in the Comments box, or the Notes box.

*Notes:* Enter spacing block information, or any other relative data, needed before cutting a key.

Click the Save button at the bottom of the screen to save the data. The chart will be added to the database in alphabetical order by Manufacturer’s name.

### Other files on the CD-ROM

Your CD-ROM also contains a trial version of our Genericode Me program, as well as the Framon catalog. Both are located in the “Genericode Trial Version” folder on the CD-ROM. The setup program for Genericode Me is “TRSETUP.EXE”. If you need any help with any of our software programs, feel free to contact us at 989-354-5623.